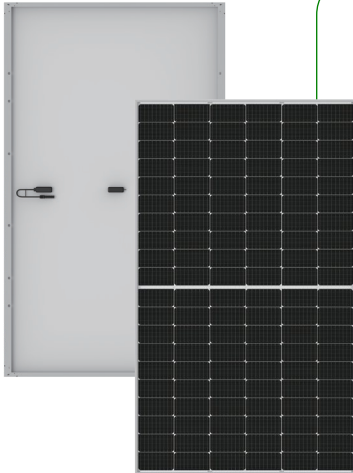


MONO

120 Half-Cells



V166series, monofacial module



Features



High PID resistant

Advanced cell technology and qualified materials lead to high resistance to PID



High module efficiency

Advanced module technology delivers superior module efficiency



Current sorting process

System output maximized by reducing mismatch losses up to 2% with modules sorted & packaged by amperage



Positive tolerance

Positive tolerance of up to 5W delivers higher output reliability



Extended wind and snow load tests

Module certified to withstand extreme wind (3800 Pascal) and snow loads (5400 Pascal) *



High system voltage Compatible

Maximum 1500VDC system voltage saves total system cost

Certifications and standards:
IEC 61215, IEC 61730, conformity to CE



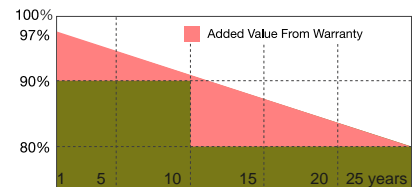
Chinayard Co.,LTD designs, manufactures and delivers high efficient solar modules to the world.

Founded in 2009, Chinayard is well known for its advanced technology, reliable product quality, and excellent customer service.

As one of leading PV enterprises, Chinayard has delivered more than 2.0G of solar products to residential, commercial, utility and off-grid projects all around the world.

Superior Warranty

- 12-year product warranty
- 25-year linear power output warranty



Chinayard distributor



Chinayard Co.,LTD

Version: CYC_V22210_EN

All information and data are subject to change without notice.

Email:chinayardliu@126.com

www.chinayard.com

Electrical characteristics at Standard Test Conditions(STC)

Model	CYC-V166- MF120-370M	CYC-V166- MF120-375M	CYC-V166- MF120-380M	CYC-V166- MF120-385M
Maximum Power(Pm)	370Wp	375Wp	380Wp	385Wp
Cell type	Mono	Mono	Mono	Mono
Optimum Operating Current(Imp)	10.75A	10.84A	10.92A	11.00A
Short Circuit Current (Isc)	11.51A	11.60A	11.68A	11.77A
Optimum Operating Voltage(V)	34.39V	34.58V	34.79V	34.98V
Open Circuit Voltage(Voc)	40.88V	41.11V	41.36V	41.58V
Maximum System Voltage	1500V			
Module efficiency	20.31%	20.59%	20.86%	21.13%

Standard Test Conditions (STC): Irradiance 1,000 W/m²; AM 1.5; module temperature 25°C.

Measuring uncertainty of power: ±3%.

Certified in accordance with IEC 61215, IEC 61730-1/2 and UL 1703.

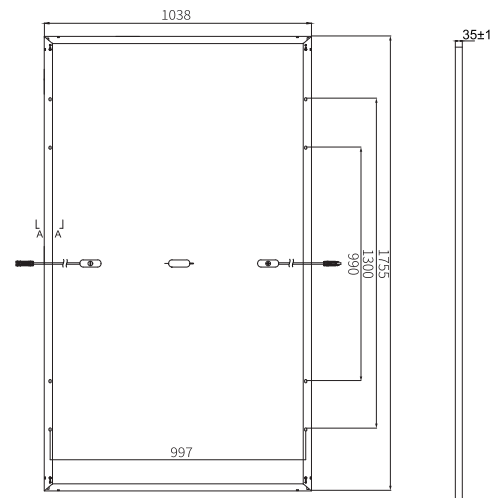
Temperature Characteristics

Nominal Operating Cell Temperature(NOCT)	45±2°C
Temperature Coefficient of Pmax	-0.35%/°C
Temperature Coefficient of Voc	-0.27%/°C
Temperature Coefficient of ISC	+0.48%/°C

Material Characteristics

Dimension	1755*1038*35mm
Weight	Appro 19.5kgs
Frame	Anodized aluminum alloy
Front Glass	low-iron tempered glass ,3.2mm
Cell Encapsulation	EVA (Ethylene-Vinyl-Acetate)
Back Sheet	Composite film
Cells (quantity/material)	120 piece solar cells
Junction Box	IP68, 3 diodes
Cable&Connector	4 mm ² , 300mm length (can be customised)

Dimensions and Structure



Units: mm

Packaging

Container 20'	180 pieces, 30Pcs/Pallet
Container 40'HC	780 pieces

Chinayard distributor



 **eSOL**

Chinayard Co.,LTD

Version: CYC_V2210_EN

All information and data are subject to change without notice.

Email:chinayardliu@126.com www.chinayard.com